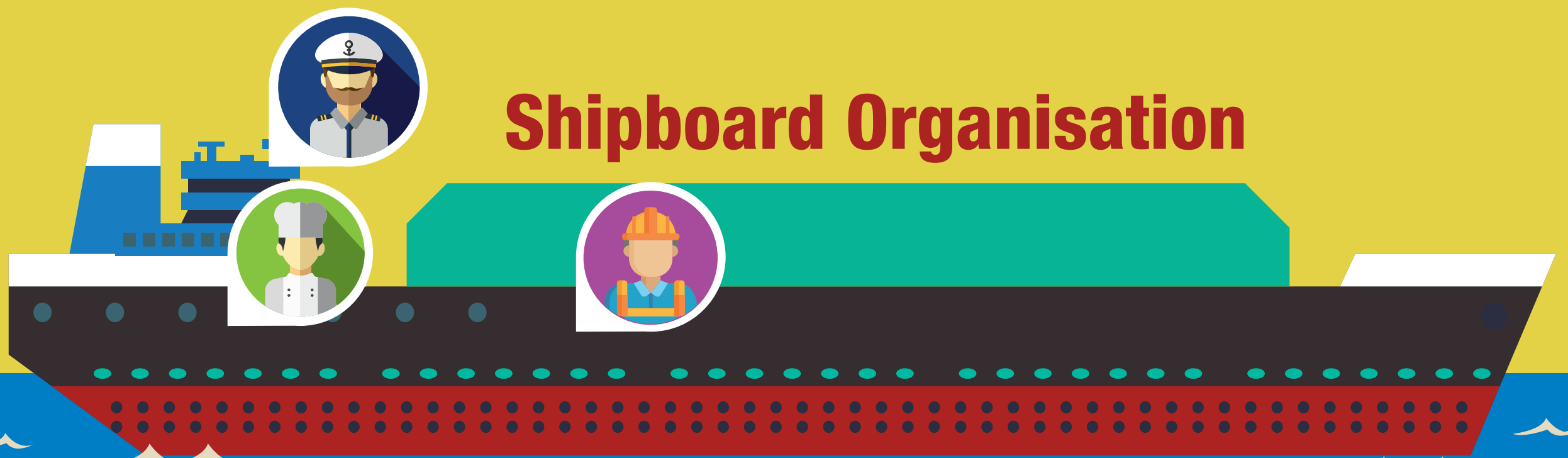




# All Hands On Deck!

Seafarers hold a variety of professions and ranks and each of these roles carries unique responsibilities which are integral to the successful operation of a vessel.



## Shipboard Organisation

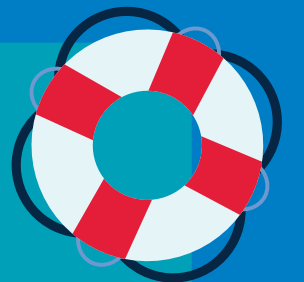
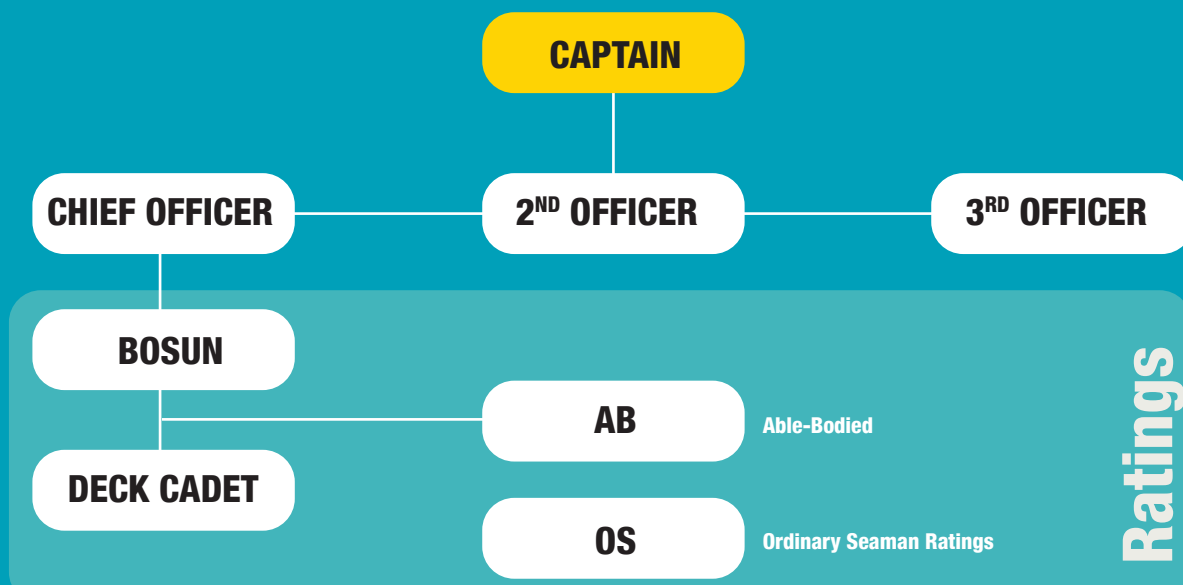


### Deck

Each Shipboard Management Team consist of

**1** Captain & Chief Engineer

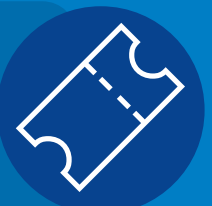
The Deck is an organisational unit aboard naval and merchant ships. The main work for the Officers on the deck includes proper watchstanding and the maintenance of the ship's hull, cargo gear and accomodations as well as the ship's life saving and firefighting appliances.



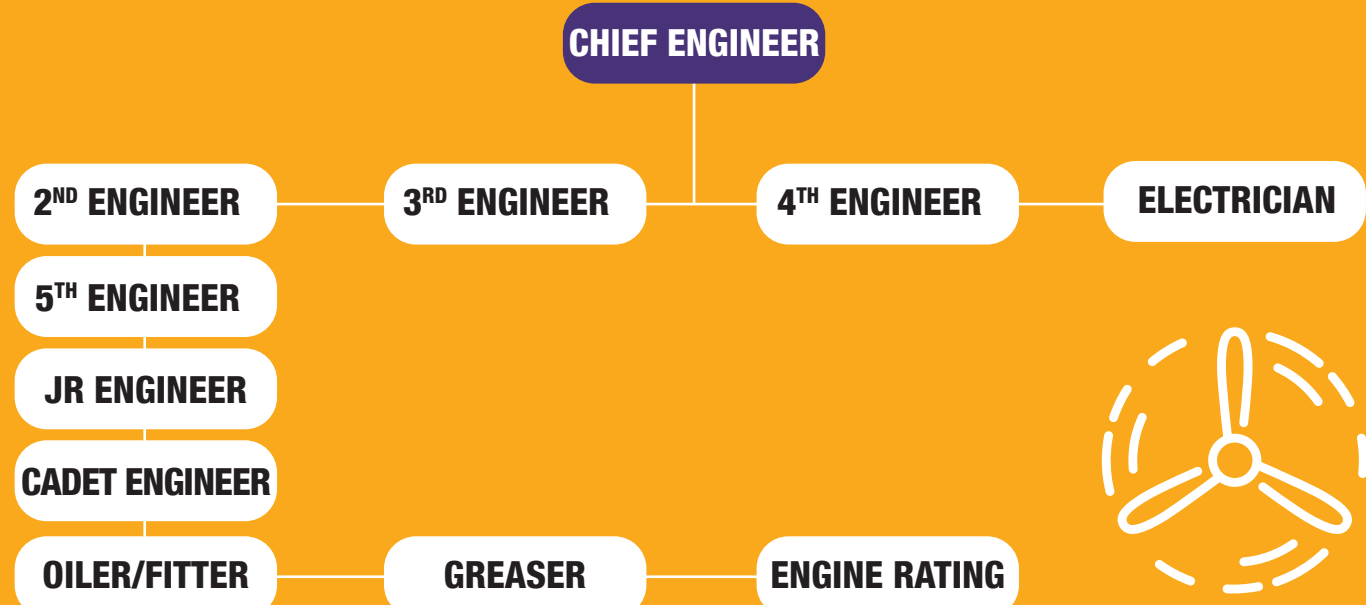
### Engine

The qualification for Chief Engineer is colloquially called a

**“Chief’s Ticket”**



The Engine department is responsible for the operation, maintenance, and repair of the propulsion systems and the support systems for crew, passengers, and cargo. It is also responsible for repairing and daily maintenance of the ship's machinery.



# AHOY!



## 3000–3500 kcal per day

average energy consumption of a seafarer in the merchant fleet



### Steward

The Steward department is responsible for the maintenance and operation of the galley, living and eating quarters of the officers and crew. It is usually headed by the Chief Steward. The Chief Steward directs, instructs and assigns personnel performing such functions as preparing and serving meals, cleaning and maintaining officers' quarters.



## Safety First!



A fire drill must be conducted within 24 hours of leaving the port if more than 25% of the crew members have not taken part in the drill in the previous month.

References  
<http://www.marineinsight.com/marine-safety/the-importance-of-fire-drills-on-ships-2/>  
<https://www.slideshare.net/raselyth/ship-organization>  
<http://www.nytimes.com/1865/08/16/news/fires-sea-shipboard-some-facts-relation-precautions-against-accidents-sea-what.html?mcubz=1>  
<http://www.laurinmaritime.com/careers-us/shipboard-management>  
<https://pdfs.semanticscholar.org/417d/df6b68a8956f17909c33eaae6f9845f2cf1.pdf>